



56 Bury Street, Salford, M3 7DA

£305 Per Week

FULLY FURNISHED 2 BED 2 BATH IN THE HEART OF MANCHESTER'S CITY CENTRE AVAILABLE MID APRIL

Local Blackfriars is a recently built development, designed with community at its heart, there is a cinema room, launderette and communal gardens

This apartment has been finished to a high standard throughout. It has an open plan, contemporary design, that boasts floor to ceiling windows in both the bedrooms and the dual aspect lounge, offering plenty of natural light as well as a private balcony overlooking the gardens.

FURNISHED - AVAILABLE APRIL 15TH

- LOCAL BLACKFRIARS
- BALCONY
- RECENTLY BUILT
- OVER 725 SQUARE FEET
- CINEMA, LAUNDRY ROOM
- FURNISHED
- HEART OF CITY CENTRE
- 2 BEDROOMS & 2 BATHS
- AVAILABLE 15TH APRIL
- DUAL ASPECT RECEPTION ROOM

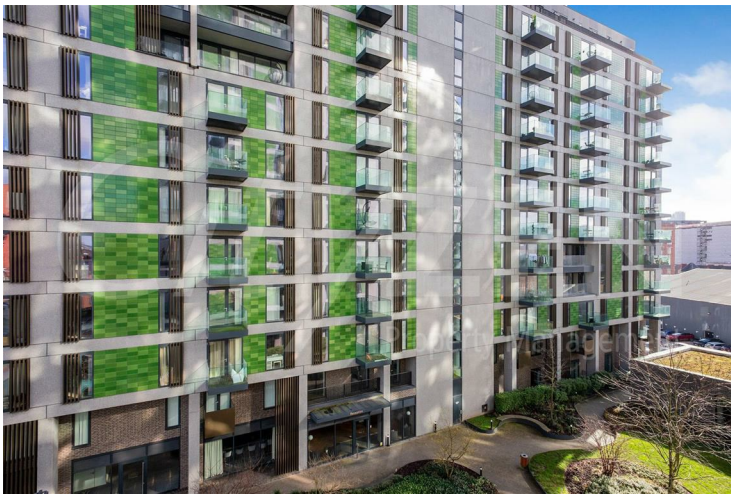
56 Bury Street, Salford, M3 7DA



RECEPTION



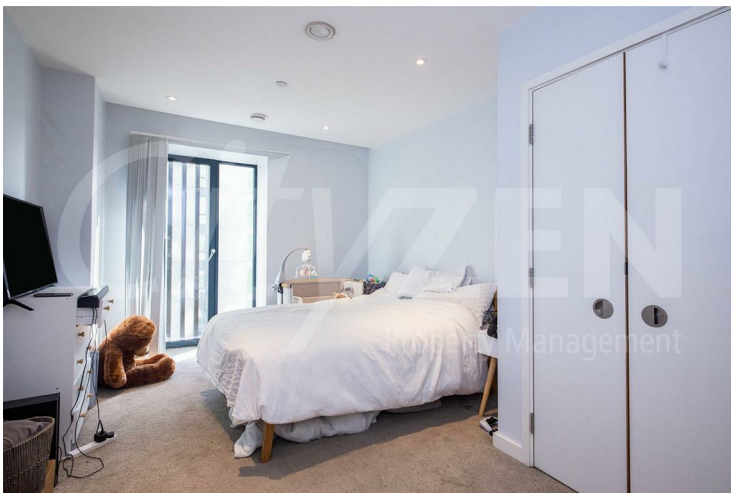
KITCHEN



LOCAL BLACKFRIARS



BEDROOM



BEDROOM



BATHROOM

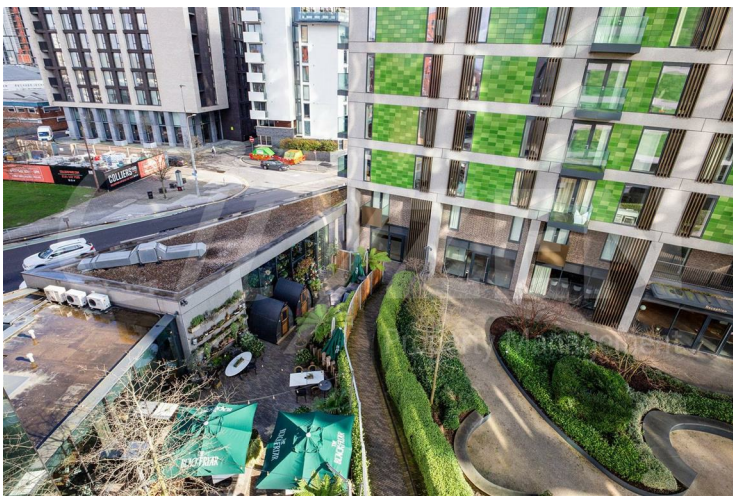
56 Bury Street, Salford, M3 7DA



EN-SUITE



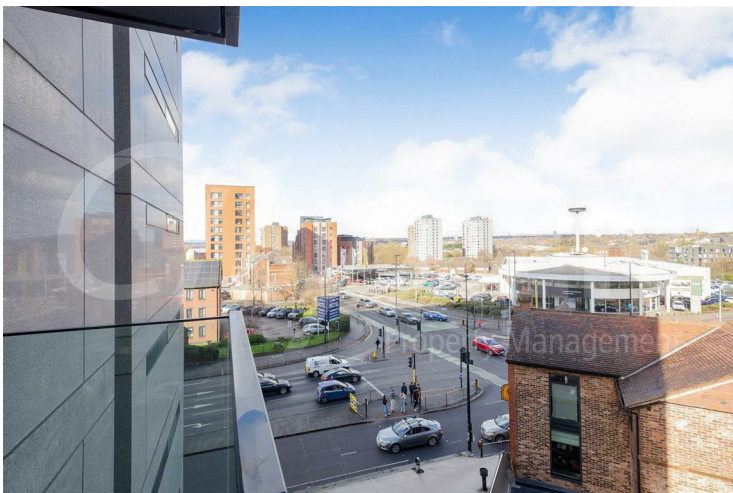
RECEPTION



VIEW FROM APARTMENT



RECEPTION



VIEW FROM APARTMENT



RECEPTION

56 Bury Street, Salford, M3 7DA



RECEPTION



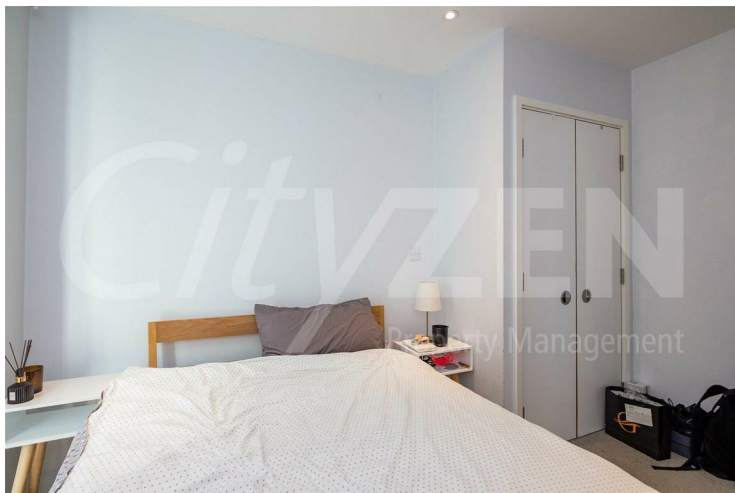
LOCAL BLACKFRIARS



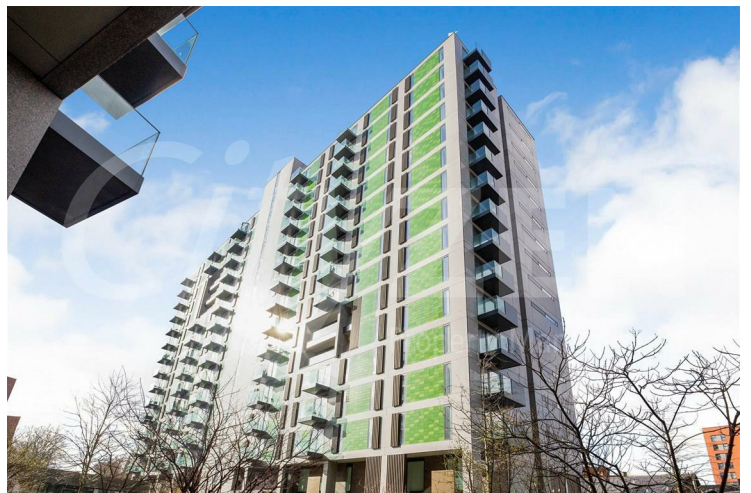
BEDROOM



LOCAL BLACKFRIARS

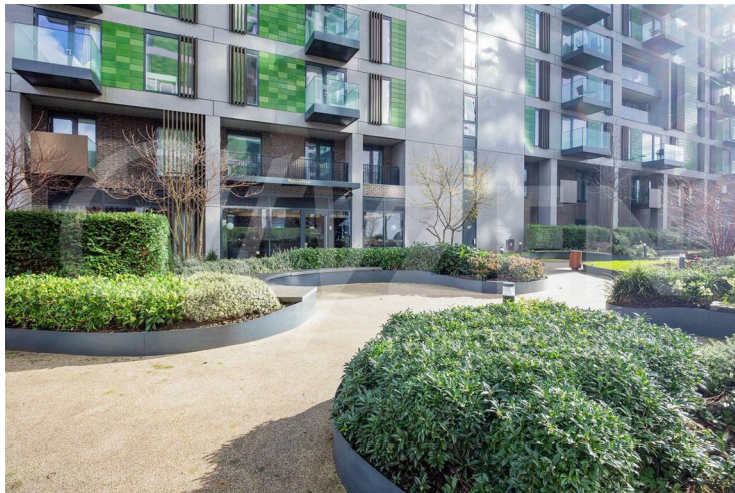


BEDROOM



LOCAL BLACKFRIARS

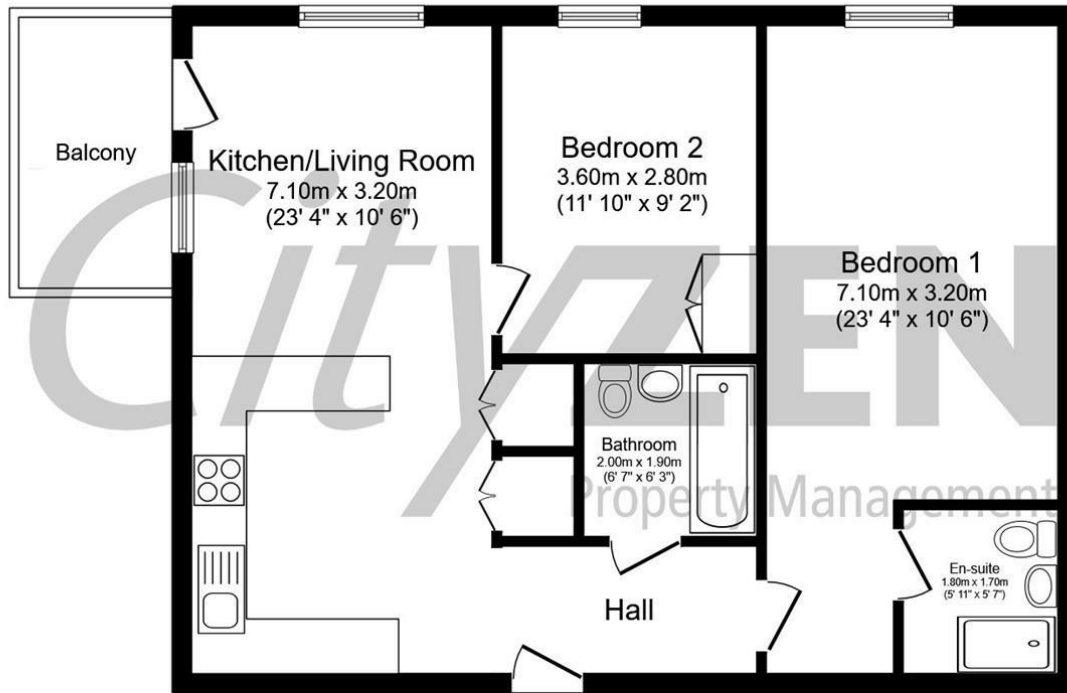
56 Bury Street, Salford, M3 7DA



LOCAL BLACKFRIARS



LOCAL BLACKFRIARS



Total floor area 67.4 m² (726 sq.ft.) approx

This floor plan is for illustrative purposes only. It is not drawn to scale. Any measurements, floor areas (including any total floor area), openings and orientation are approximate. No details are guaranteed, they cannot be relied upon for any purpose and they do not form part of any agreement. No liability is taken for any error, omission or misstatement. A party must rely upon its own inspection(s). Powered by www.focalagent.com



Energy Efficiency Rating		
	Current	Potential
Very energy efficient - lower running costs		
(92 plus) A		
(81-91) B		
(69-80) C		
(55-68) D		
(39-54) E		
(21-38) F		
(1-20) G		
Not energy efficient - higher running costs		
		81
England & Wales EU Directive 2002/91/EC		
Environmental Impact (CO ₂) Rating		
	Current	Potential
Very environmentally friendly - lower CO ₂ emissions		
(92 plus) A		
(81-91) B		
(69-80) C		
(55-68) D		
(39-54) E		
(21-38) F		
(1-20) G		
Not environmentally friendly - higher CO ₂ emissions		
England & Wales EU Directive 2002/91/EC		

We have prepared these property particulars as a general guide to a broad description of the property. They are not intended to constitute part of an offer or contract. We have not carried out a structural survey and the services, appliances and specific fittings have not been tested. All photographs, measurements, floorplans and distances referred to are given as a guide only and should not be relied upon for the purchase of carpets or any other fixtures or fittings. Lease details, service charges and ground rent (where applicable) and council tax are given as a guide only and should be checked and confirmed by your Solicitor prior to exchange of contracts.